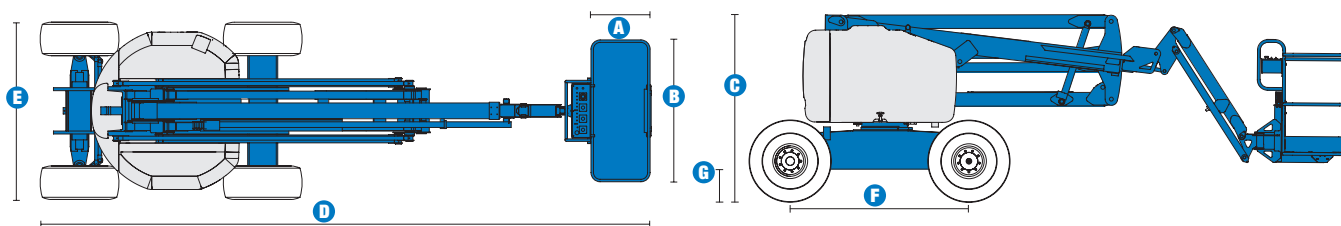


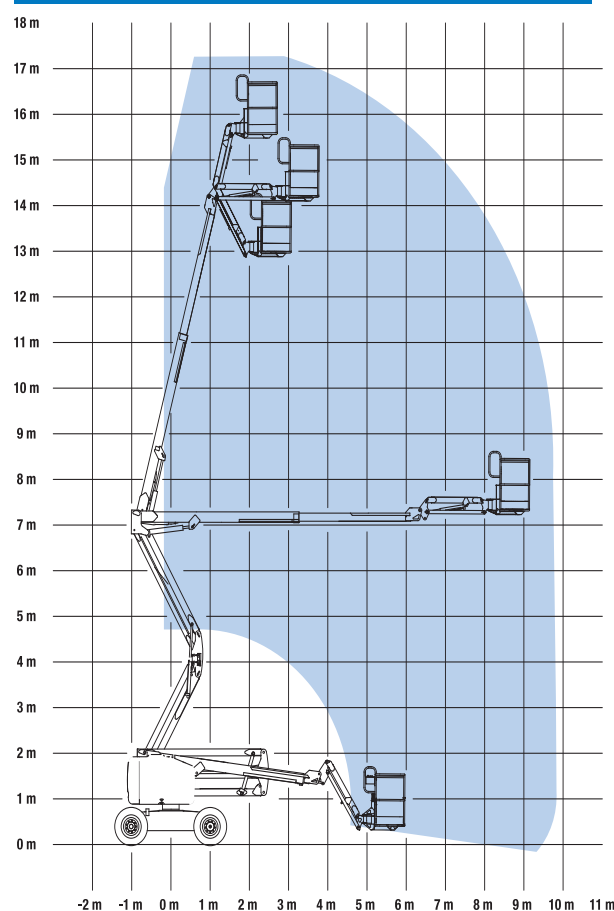
## Specifications



### MODEL Z™-51/30J RT

MEASUREMENTS	Metric	US
Working height maximum*	17.62 m	57 ft 3 in
Platform height maximum	15.62 m	51 ft 3 in
Horizontal reach maximum	9.25 m	30 ft 4 in
Up-and-over clearance at primary arm	7.47 m	24 ft 6 in
<b>A</b> Platform length	76 cm	2 ft 6 in
<b>B</b> Platform width	1.83 m	6 ft
<b>C</b> Height - stowed	2.16 m	7 ft 1 in
<b>D</b> Length - stowed	7.50 m	24 ft 6 in
<b>E</b> Width	2.29 m	7 ft 6 in
<b>F</b> Wheelbase	2.03 m	6 ft 8 in
<b>G</b> Ground clearance - centre	39 cm	1 ft 3.5 in

### RANGE OF MOTION Z™-51/30J RT



### PRODUCTIVITY

Lift capacity	227 kg	500 lbs
Platform rotation	160°	160°
Vertical jib rotation	135° (+78°/-57°)	135°
Turntable rotation	355° non-continuous	
Turntable tailswing	zero	zero
Drive speed - stowed	8 km/h	5 mph
Drive speed - raised**	1,1 km/h	0.6 mph
Gradeability - 4WD - stowed***	45%	45%
Turning radius - inside	1.68 m	5 ft 6 in
Turning radius - outside	4.50 m	14 ft 9 in
Controls	12 V DC proportional	
Tyres	355/55 D625 foam filled	

### POWER

Power source	Deutz L03i 2011 3 cylinder diesel 48 hp (35.8 kW)	
Auxiliary power unit	12 V DC	12 V DC
Hydraulic tank capacity	90.8 L	24 gal
Fuel tank capacity	64.4 L	17 gal

### WEIGHT\*\*\*\*

	7,212 kg	15,900 lbs
--	----------	------------

### STANDARDS COMPLIANCE CE EN280, PB-10-611-03

\* The metric equivalent of working height adds 2 m to platform height. U.S. adds 6 ft to platform height.

\*\* In lift mode (platform raised), the machine is designed to operate on firm, level surfaces only.

\*\*\* Gradeability applies to driving on slopes. See Operator's Manual for details regarding slope ratings.

\*\*\*\* Weight will vary depending on options and/or country standards.

## Features

### EASILY CONFIGURED TO MEET YOUR NEEDS

#### PLATFORM OPTIONS

- Steel 1.83 m (6 ft) (standard)

#### JIB

- 1.52 m (5 ft) jib boom

#### POWER

- Deutz Diesel LO3i 2011 48 hp (35.8 kW)

#### DRIVE

- 4x4

#### AXLE

- Active oscillating axle

#### TYRE OPTIONS

- Rough terrain foam-filled tyres (standard)
- Rough terrain non-marking foam-filled tyres

### STANDARD FEATURES

#### MEASUREMENTS

- 17.62 m (57 ft 3 in) working height
- 9.25 m (30 ft 4 in) horizontal reach
- 7.16 m (23 ft 6 in) up-and-over clearance
- Up to 227 kg (500 lb) lift capacity

#### PRODUCTIVITY

- Self-levelling platform
- Hydraulic platform rotation
- Fully proportional controls
- Drive enable system
- AC power to platform
- Horn
- Hour meter
- Tilt alarm
- 355° non-continuous turntable rotation
- Zero tailswing
- Positive traction drive
- Thumb rocker steer joystick
- Alarm package with beacon
- Certified load sensor

#### POWER

- All engines are emissions compliant
- 12 V DC auxiliary power
- Engine protection package
- Deutz intake air heater

### OPTIONS & ACCESSORIES

#### PRODUCTIVITY

- Platform swing gate
- Half mesh platform inserts with swing gate
- Platform top auxiliary rail
- Air line to platform
- Basic hostile environment kit
- Tool tray
- Fluorescent tube caddy
- Pipe cradle (pair)
- Platform work lights
- Lockable platform control box covers
- Tow package

#### POWER

- Engine gauge package
- 3000 watt AC generator (220 V/50hz)
- Diesel scrubber muffler with spark arrestor



#### UK

The Maltings  
Wharf Road  
Grantham NG31 6BH  
UK  
Tel: +44 (0)1476 584333  
Fax: +44 (0)1476 584334

#### France

10, ZA de la Croix St. Mathieu  
28320 Gallardon  
France  
Tel: +33 (0)2 37 26 09 99  
Fax: +33 (0)2 37 26 09 98

#### Germany

Finienweg 3  
28832 Achim/Bremen  
Germany  
Tel: +49 (0)4202 8852-0  
Fax: +49 (0)4202 8852-25

#### Spain

Gaià 31, Pol. Ind. Plá d'en Coll  
08110 Montcada i Reixac  
Barcelona  
Spain  
Tel: +34 93 572 50 90  
Fax: +34 93 572 50 91

#### Scandinavia

Aröds industriväg 34  
422 43 Hisings Backa  
Sweden  
Tel: +46 31 57 51 00  
Fax: +46 31 57 51 04

#### Middle East

Terex Middle East  
PO Box 282325, Dubai  
U.A.E.  
Tel: +971 4 885 8030  
Fax: +971 4 885 6364  
Email: awp.infome@terex.com

#### Genie United States

18340 NE 76th Street  
P.O. Box 97030  
Redmond, WA  
USA 98073-9730  
Tel: +1 425 881-1800  
Fax: +1 425 883-3475

**Email:** AWP-InfoEurope@terex.com

**Distributed By:**