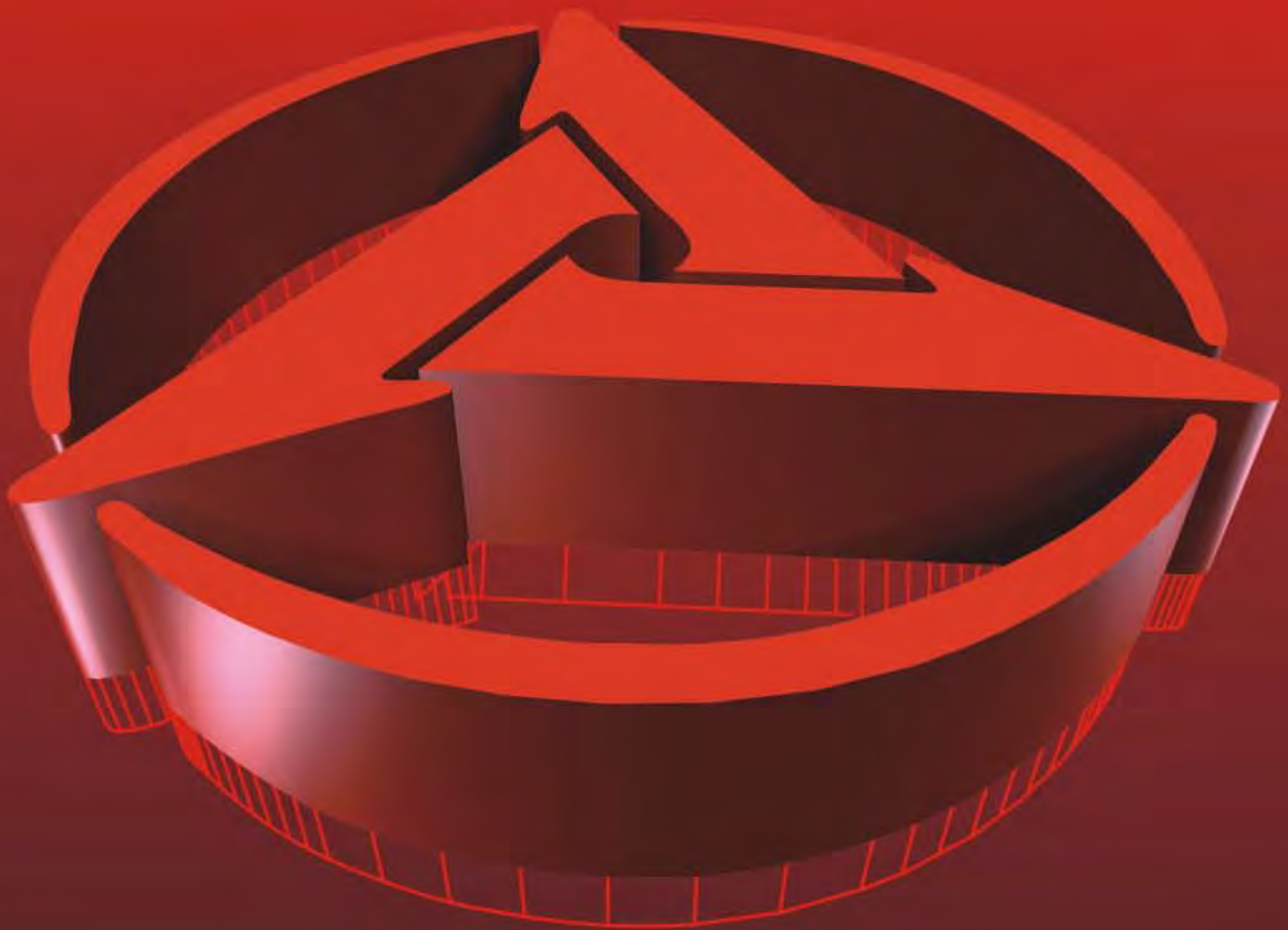




SANY 55 tons of lifting capacity
STC 500 Truck Crane



01

02

Max. rated lifting capacity
55t

Max. rated power of engine
245
KW

Max. travel speed
40%

Max. rated lifting capacity 55t. Min. working radius 3.0m.

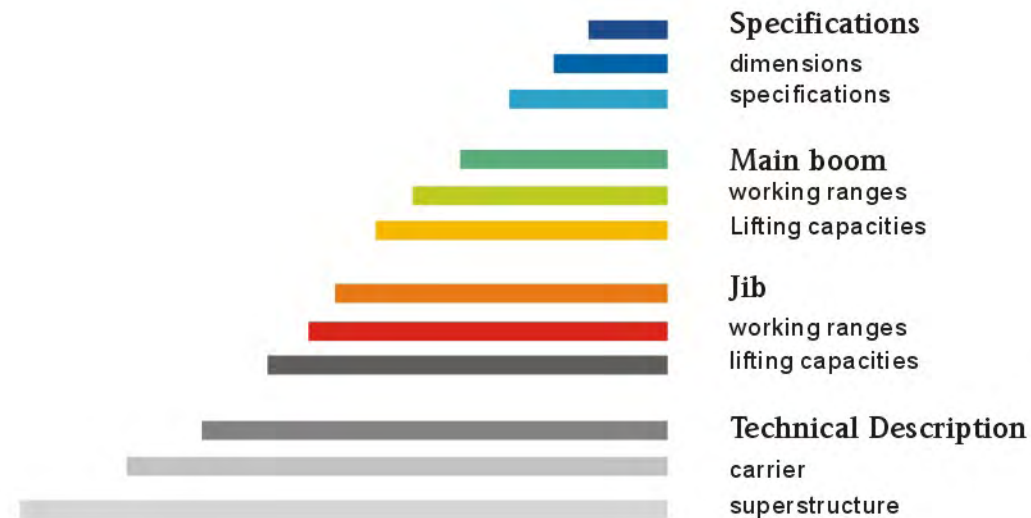
5 sections partially synchronized telescoping boom. Main boom: fully extended length 42.5m, max. lifting height 42.8m.

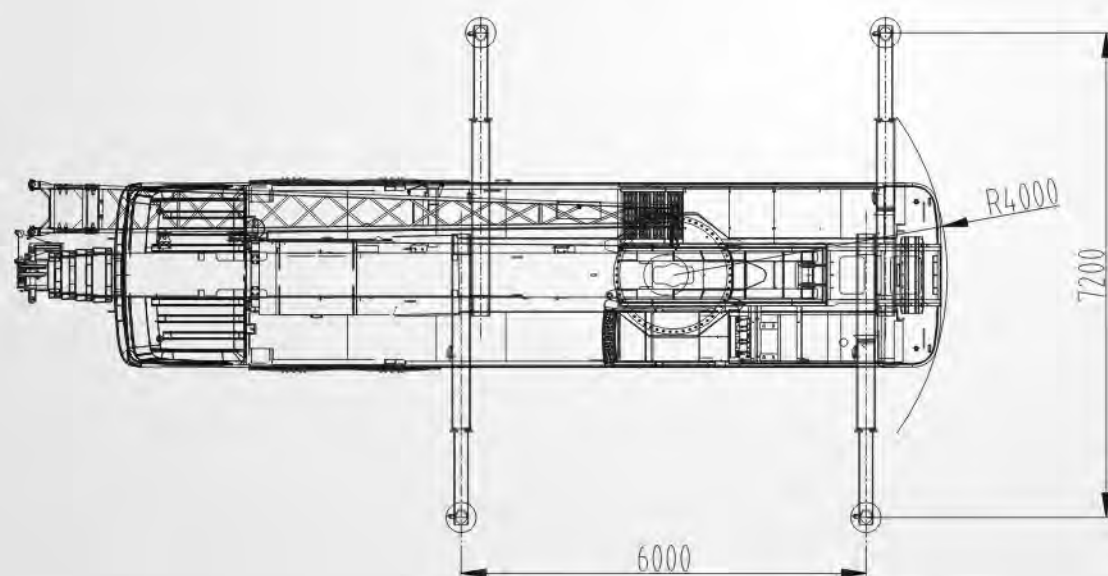
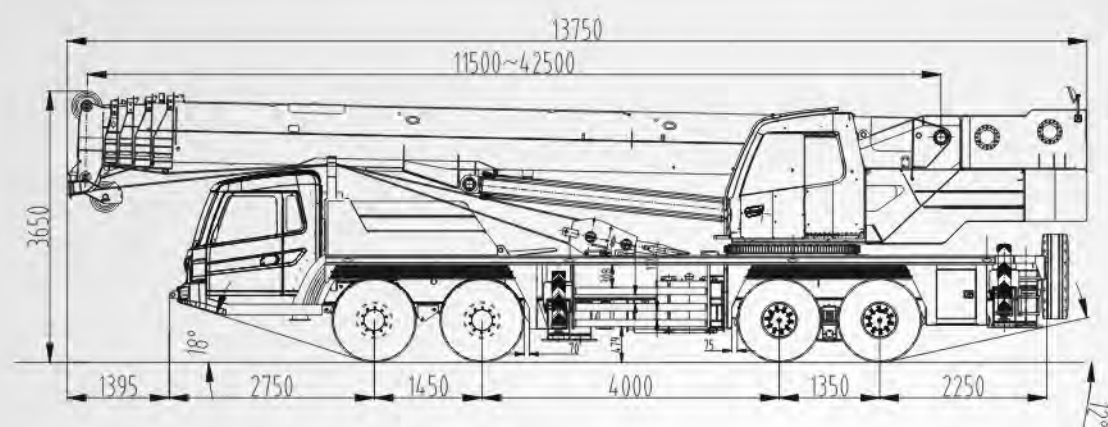
Max. rated power of engine 245kW, exhaust level being in compliance with Euro IIIA standard.

Max. travel speed 85km/h, max. gradeability 40%(theoretical)

SYML(sany moment limiter) to provide safety and effective protection for customers.

Sany self-designed load transmission and constant power control hydraulic system.





Specifications

load



Working speed

Max. main winch speed	m/min	130
Max. load of main winch(single rope)	kN	57.25
Wire rope diameter- length		18mm×220m
Max. speed of auxiliary winch	m/min	130
Load of auxiliary winch (single rope)	kN	57.25
Auxiliary winch wire rope diameter-length		18mm×130m
Max. Slewing speed	r/min	2

Boom elevation and slewing diameter

Boom elevation	°	-2° ~ 80°
Slewing diameter	m	4

Carrier performance

Max. travel speed	km/h	85
Max. Gradeability	%	40

05

DESCRIPTIONS

carrier

06

1 Drive/steering



2 Frame

Integrated welding structure fabricated from high-strength steel.

4 Engine

WP10.336N Weichai engine, rated power 245kW at 1900rpm, fuel tank capacity 300L.

3 Outriggers

H-form arrangement and fully hydraulic control with horizontal and vertical extension, independent working movement.

5 Transmission System

9-speed synchronized gearbox, transmission shaft with end gear structure.

6 Tyres

12 wheels
12.00R20 20PR tyres

9 Axles



7 Steering

Single circuit hydraulic-assist steering system with mechanical slewing-limit.

10 Suspension

Steel spring imbalanced suspension on axles 1 and 2, steel spring two-axles balanced suspension on axles 3 and 4.

8 Electric equipment



11 Driver's cab

Rubber mounted steel cab, corrosion-resistant power coating and two coating painting, 2.68wide, ergonomic cab, 2 comfortable seats, with pneumatically sprung driver's seat inc. head rest. Three-point seat belts and convenient dashboard, vertically adjustable steering wheel, Front baffle triple glass, wide visibility, windscreen defroster fans, side electric toughened glass, engine-dependant hot water heater, roller blinds, radio.

12 Brakes

Adopted air brake. Dual-circuit driving brake controlled by foot pedal; parking brake and emergency brake controlled by hand brake handle.

13 Hydraulic system

Constant displacement gear oil pump controls horizontal leveling and outriggers telescoping.

Superstructure

1 Operator's cab

Fabricated from corrosion-resistant steel, equipped full-covered flexible decorations, front window door could open, adjustable seat provide comfort for the driver.

2 Boom

Five sections partially synchronized telescoping boom, hexagon cross section; telescopic mechanism assisted by two cylinders and sheaves, balanced valve mounted on the cylinder.

3 Counterweight

3.5t, mounted on the turntable through connecting bolts.

4

Hydraulic system

Load adaptor and constant power control variable displacement axial piston pump speed-proportion and power-adjust regulation, automatically regulate oil pump through load condition to utilize power.

5

Safety devices

Colorful LCD, integrated load moment indicator, hook load, rated load, boom length, angle, lifting height. Integrated load charts and working parameter set-up. Safety-limit.

6

Main winch

Constant displacement piston pump, hydraulic braking system, mounted balanced valve. Max. speed(single rope) 130m/min, rope length 220m.

7

Auxiliary winch

Constant displacement piston motor, hydraulic braking system, mounted balanced valve. Max. speed(single rope) 130m/min, rope length 130m.

8

Elevation

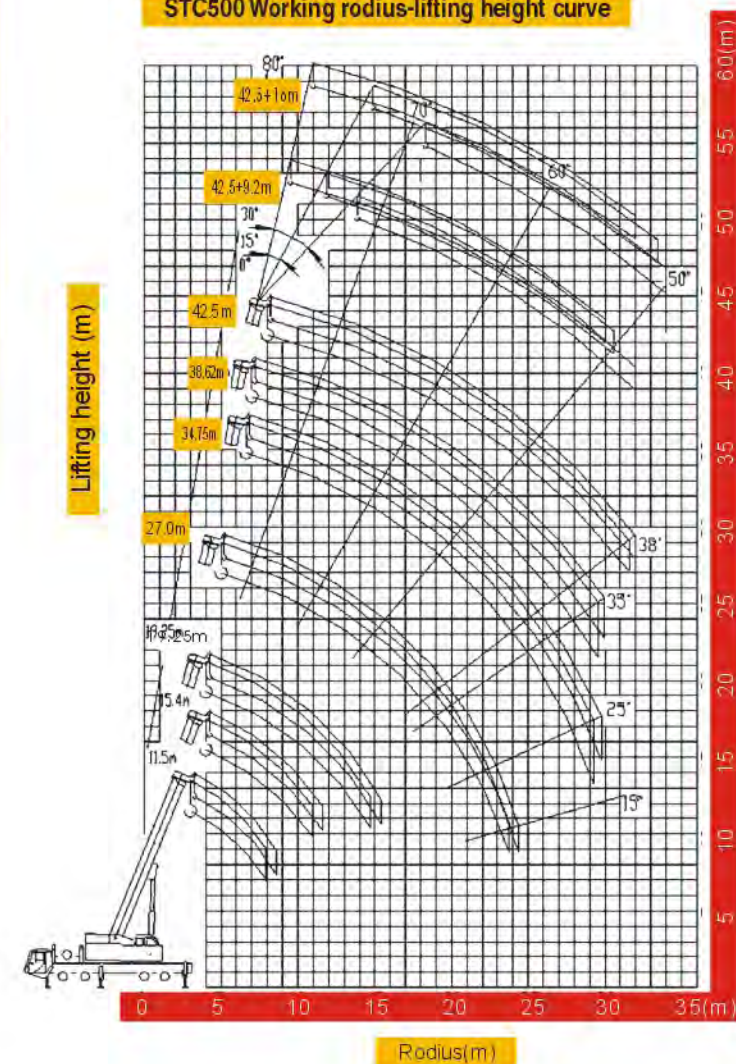
Deadweight-dependent and electric-proportion balanced valve controlled elevation.

9

Slew unit

Constant displacement piston pump, slewing with retarder. Max slewing speed 2r/min.

STC500 Working radius-lifting height curve



Load chart for main boom

Unit: kg

Radius(m)	Fully extended outriggers, over side and rear										
	11.5m	15.4m	19.25m		27.0m		34.75m		38.62m		42.5m
3.0	55000	40000	32000	21500							
3.5	50000	40000	32000	21500							
4.0	44600	40000	32000	21500							
4.5	40000	36000	31000	21500	21000	15000					
5.0	36200	33200	29000	20000	21000	15000					
5.5	32000	30000	27500	19000	21000	14500					
6.0	28000	27500	25700	18100	21000	13700	14000	9000			
7.0	23500	23200	21500	17000	18000	12100	14000	9000	11500	9000	
8.0	19500	19300	17000	15600	15800	11000	12700	8500	11000	9000	9000
9.0	15300	15000	13700	13800	14000	10000	11700	7800	10500	8500	8500
10.0		11700	10900	12000	12000	9000	10700	7100	10000	8000	8100
11.0		9600	9000	10600	9900	8200	9400	6400	9000	7500	7800
12.0		8000	8000	8700	9000	7500	8500	5800	8000	7000	7000
14.0			5300	6400	6300	6100	6600	5000	6300	5900	6000
16.0				4600	4700	5000	5000	4400	5000	5000	5200
18.0					3500	4100	4000	3800	4000	4000	4200
20.0					2500	3000	3100	3200	3200	3500	3300
22.0					1900	2300	2200	2700	2400	2800	2600
24.0					1300	1800	1700	2400	1800	2100	2000
26.0							1200	1900	1300	1650	1500
28.0							800	1500	900	1300	1150
30.0							500	1000	650	900	900
32.0								800		600	600
34.0										350	
Telescoping condition(%)											
Telescoping Mode	(,)										
2nd boom	0	50	100	0	100	0	100	0	100	50	100
3rd boom	0	0	0	33	33	66	66	100	83.3	100	100
4th boom	0	0	0	33	33	66	66	100	83.3	100	100
Top boom	0	0	0	33	33	66	66	100	83.3	100	100
Number of Parts of line	12	10	8		6		4		3		3

Load chart for jib

Unit: kg

Main boom Working angle	Fully extended outriggers, over side and rear					
	9.2m jib			16m jib		
	0°	15°	30°	0°	15°	30°
78°	3500	2400	2000	2400	1450	1000
77°	3200	2300	1900	2400	1400	1000
75°	3000	2200	1800	2300	1300	950
73°	2700	2000	1700	2000	1200	850
71°	2500	1800	1600	1800	1100	850
68°	2200	1700	1400	1500	1000	800
66°	2000	1500	1300	1300	950	760
56°						
63°	1800	1400	1100	1100	850	720
61°	1500	1200	950	950	750	650
58°	1100	950	750	650	600	550
	700	650	550	500		
min. boom angle	55					



SANY

Address: Jinzhou development, Changsha, Hunan, China

Tel: (86)731-87873131

Fax: (86)731-84031999-196

Service hotline: (86)-4008878318

Consulting line: (86)-4008879318

E-mail: xujh@sany.com.cn

Post code: 410600

Web: www.sanygroup.com

Sany reserves the right to amend these specifications at any time without notice.
Further technology details according to actual product!